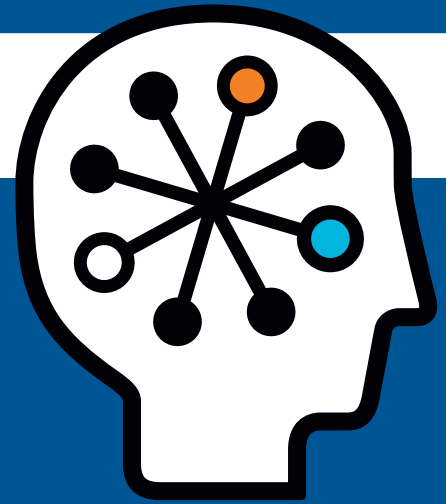




# Flexible Licensing Services for HP OpenCall Service Access Controller

Data sheet



## The Flexible Licensing Services allows you to address two seemingly conflicting concepts: limiting financial risks and increasing revenues

### Introduction

As a service provider in today's evolving telecom services market, you need to grow loyalty and increase average revenue per user (ARPU), reduce the cost of operations, as well as maintain a real-time charging infrastructure that copes with new services. The HP OpenCall Service Access Controller is the cornerstone of a convergent charging solution, bringing together prepaid and postpaid voice and data services; it allows you to roll out innovative payment solutions in a timely fashion.

You also need to find opportunities to offer enhanced services to subscribers, while looking for operational advantages and new revenue streams. Now you can offer your subscribers the flexibility to deal with increased call volumes at any time with HP OpenCall Flexible Licensing Services. The Flexible Licensing model provides customers with HP OpenCall Service Access Controller version 5.0 the ability to process telecom incoming calls and acquire the appropriate

license afterwards. The Flexible Licensing model is based on two services:

- **Initialization Service:** A one time delivery enabling the prerequisites to the Monitoring Service
- **Monitoring Service:** A yearly renewable service providing the benefits of the Flexible Licensing model

### Ideal environment

At the time where your existing network is called to evolve towards a software-centric infrastructure, you want to limit financial risks related to the purchase of the software license. The Flexible Licensing model for OpenCall Service Access Controller helps you make the most of your investment in license usage. The Flexible Licensing model is well suited for fast growing networks or when launching new services with unpredictable traffic impact—it helps you grow your business, taking advantage of the full platform resources without worrying about licensing issues.

This model can be started at any time you choose, right at the beginning when you start using the platform in your network or at a later date. And you can choose to switch back to the standard licensing model at the end of the Monitoring service.

### Flexible Licensing model, aligned with your revenue stream

The HP OpenCall Service Access Controller platform uses a licensing model based on Busiest Hour Call Attempts (BHCA). BHCA is an industry-standard measurement for call processing performance that

records the maximum number of calls a platform handles during the busiest hour of the day. The HP OpenCall Service Access Controller comes with a perpetual license based on BHCA which grants you the right to permanently handle a number of calls, up to the purchased BHCA license. The HP OpenCall Service Access Controller platform is also opened to run creative additional value added services; their execution require a similar perpetual license.

While this model is well suited in an environment where the traffic is relatively stable, it becomes more limitative in fast growing networks or when launching new services with unpredictable traffic impact. At the same time, such model requires accurate capacity planning and upfront investment to adjust software license with planned growth.

As an alternative, HP OpenCall Service Access Controller proposes the Flexible Licensing Services which allows you to enhance your software investment.

## Key features and benefits

The Flexible licensing model for HP OpenCall Service Access Controller delivers its benefits to all types of services running on the platform.

How does it work? Quarterly, we enable an unlimited software capacity on the platform, monitor the software usage, present you a consolidated report and we notify you when a license purchase is due.

For your convenience, the services are designed to be delivered remotely.

### Initialization Service

The Flexible Licensing Initialization Service is a punctual delivery. With an HP telecom engineer, you define the process and details of the remote access to the platform.

The Initialization Service includes:

- The evaluation of the maximum traffic/license compatible with the platform hardware to avoid a platform overload
- The Installation, configuration, and start of the Traffic Monitoring Tool that records the software usage on the platform, and corresponding checks

### Monitoring Service

The service is delivered over a year. It includes the following:

- Quarterly service
  - HP telecom engineer enables a temporary “unlimited” software capacity on the platform; the duration of this capacity covers the quarter plus a grace period
  - He collects the software usage data from the platform
  - He sends you a consolidated view of the software capacity usage of the past quarter
- Notification
  - You receive a notification that a license upgrade is due when the license usage of the past quarter exceeds the perpetual license previously purchased

# Flexible Licensing Services for HP OpenCall Service Access Controller

## Technical specifications

<b>Scope</b>	<ul style="list-style-type: none"><li>• Flexible Licensing Services are available for HP OpenCall Service Access Controller release 5</li><li>• Flexible Licensing Services can be delivered on all Service Execution Platform (SEP) servers supported by this release (PA-RISC and Itanium)</li><li>• Flexible Licensing Services apply to SEP only</li></ul>
<b>Requirements</b>	<ul style="list-style-type: none"><li>• You have an active support contract for the full duration of the Services</li><li>• The Activation Service has been delivered prior the delivery of the Flexible Licensing services</li><li>• You allow remote access for the platform to an HP Telecom engineer through VPN, ISEE, or another HP approved high speed connection</li></ul>

## Customer benefits

### Financial benefits

The Flexible Licensing model brings you immediate financial benefits.

- **Increases revenue:** You can be confident that the subscribers' calls will be processed with no license limitation; In case of unpredictable increases in traffic for any reason—whether linked to the number of subscribers, change in call behaviour or the launch of innovative services you are sure to make the most of your investment
- **Reduces initial financial risk:** Upfront license investment can be reduced while increasing platform usage
- **Enables appropriate license investment:** The exact license range is purchased, you do not need to oversize the license to handle potential peaks of traffic
- **Aligns license purchase with your revenue stream:** The license purchase is indexed on traffic growth and the capacity upgrade purchase happens after your revenue has been generated and collected

### Operational benefits

The Flexible Licensing model brings you immediate operational benefits, helping you cope with increased call traffic at any time. No license capacity planning is needed. The following situations are drastically simplified:

- Management of strong growth of subscribers
- Increase of BHCA per subscriber
- Events leading to burst of calls
- Introduction of new services, whether it is an additional isolated service, or a full offer of new services

- Deployment of specific services such as tele-voting that trigger high peaks of traffic

In all cases, subscribers' satisfaction is increased—the platform smoothly handles peaks of traffic without calls being rejected due to insufficient license.

## For more Information

For more information about the HP OpenCall Flexible Licensing Services contact your local HP representative, or visit:

<http://h20208.www2.hp.com/opencall/index.jsp>

## HP Services

HP Services offers a complete set of services to help you accelerate delivery of the OpenCall Service Access Controller services to your subscribers, and quickly drive new revenue for your business. Our services address all aspects of the definition and deployment of the solution at your site, tailored based on your specific needs.

HP delivery services include:

- Project specification
- Solution configuration
- Production platform setup with N+1 high availability architecture
- Software installation, activation (that is connection in your network), and integration tests on this platform
- Support of acceptance tests performed by your organization
- Training
- Platform pilot
- Solution documentation

Around the globe, enterprises rely on HP Services to design, deploy, operate, and support the IT systems that run their businesses. HP Services capabilities cover consulting and integration, outsourcing, and support services. With more than 69,000 service professionals operating in 170 countries, acknowledged technology leadership, and a heritage of innovation in services, HP Services can point to an extensive track record of helping our customers improve their ability to support changing business needs.

© Copyright 2008, Hewlett-Packard Development Company, L.P. The information contained herein is subject to change without notice. The only warranties for HP products and services are set forth in the express warranty statements accompanying such products and services. Nothing herein should be construed as constituting an additional warranty. HP shall not be liable for technical or editorial errors or omissions contained herein.

**Technology for better business outcomes**

To learn more, visit [www.hp.com/go/opencall](http://www.hp.com/go/opencall)

4AA1-8566ENW, March 2008

